



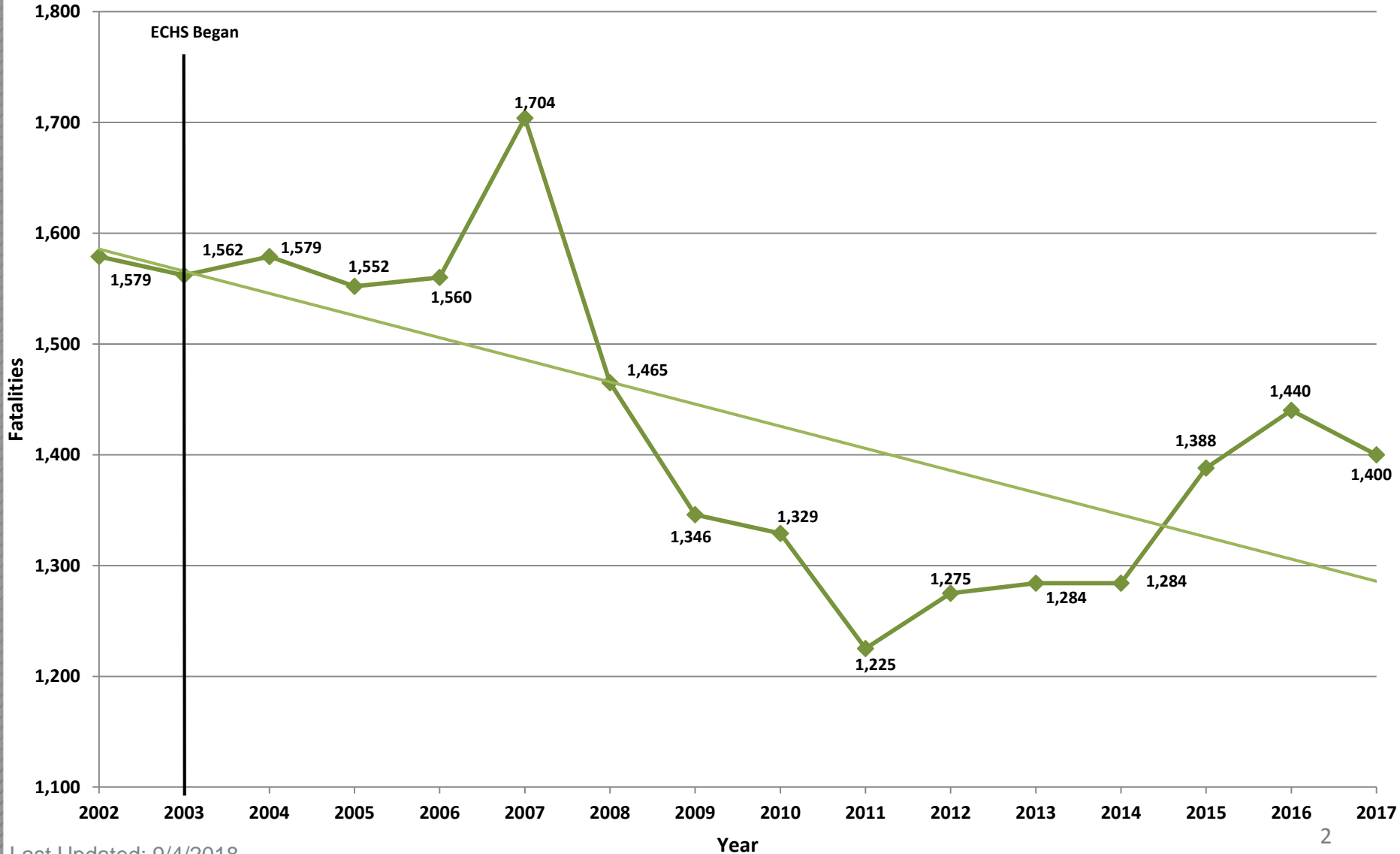
NORTH CAROLINA
Department of Transportation



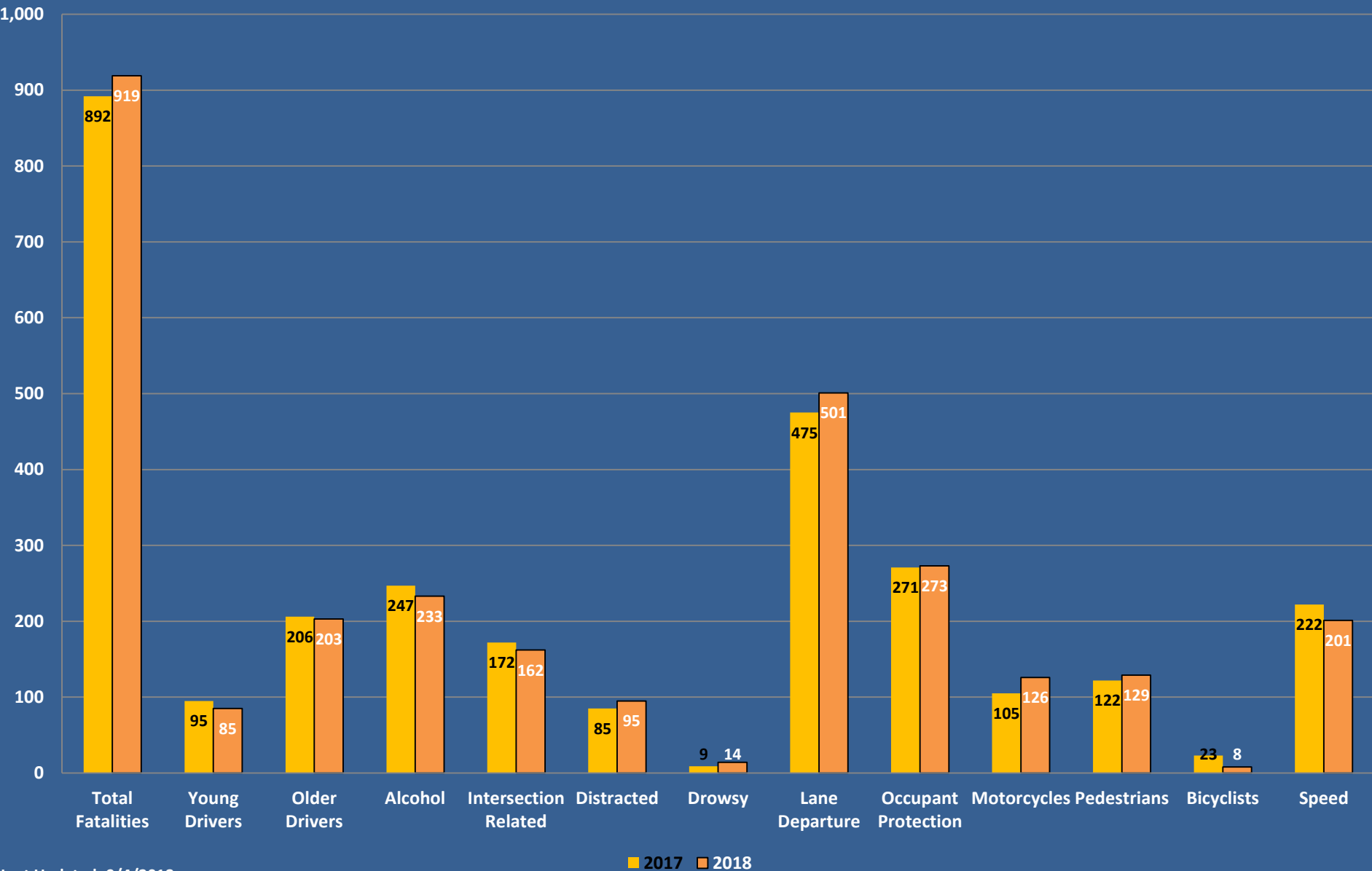
Fatal and Serious Injury Trend Update

September 7, 2018

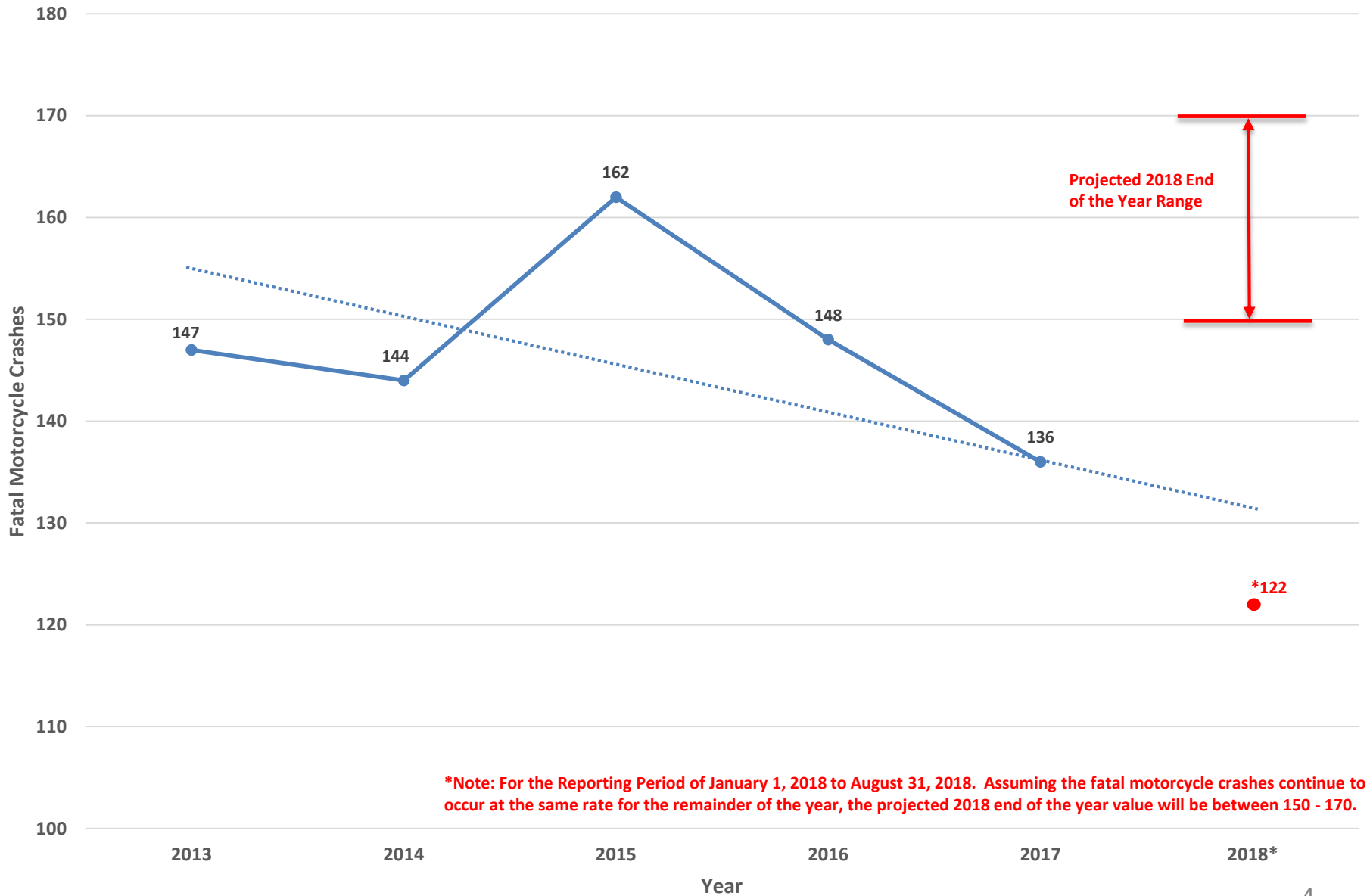
North Carolina Fatalities Trends Since 2002



Year to Date (January-August) Fatalities

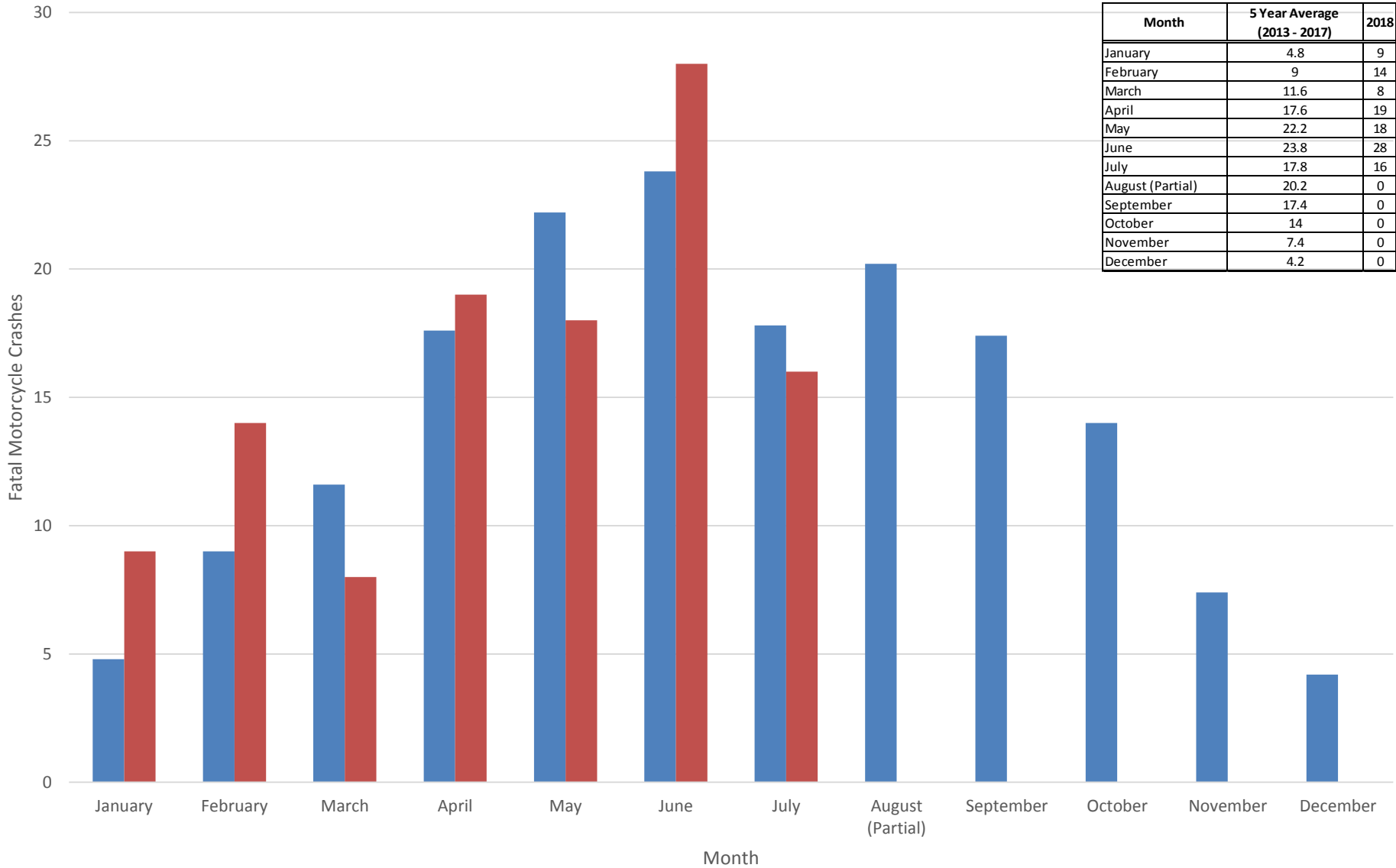


North Carolina Fatal Motorcycle Crashes



*Note: For the Reporting Period of January 1, 2018 to August 31, 2018. Assuming the fatal motorcycle crashes continue to occur at the same rate for the remainder of the year, the projected 2018 end of the year value will be between 150 - 170.

Fatal Motorcycle Crash Data By Month



Fatal Motorcycle Crash Facts

January – July 2017 and 2018

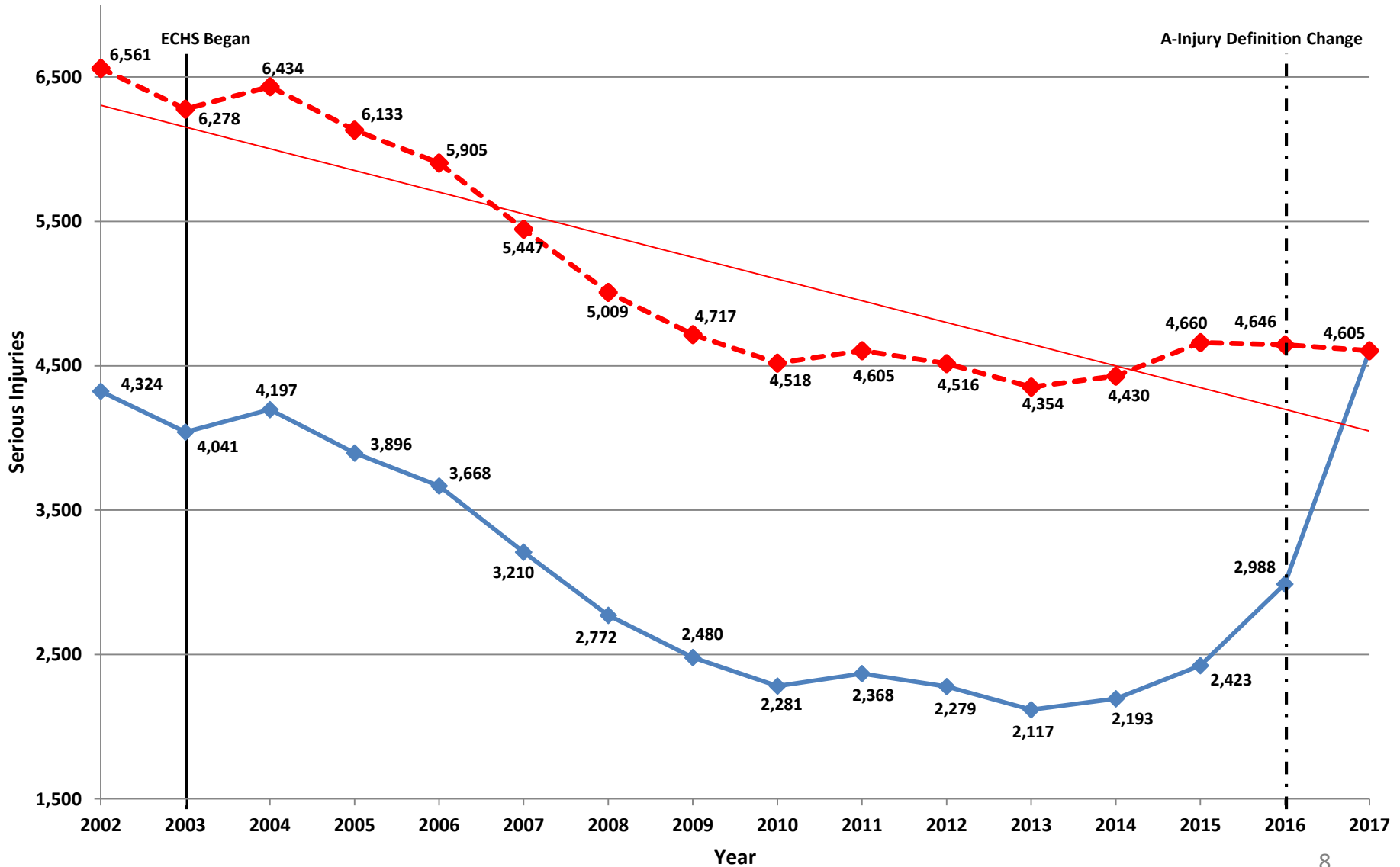
- 2017 was the lowest total in the last 10 years for motorcycle crashes
- 147 is the five year average for motorcycle fatal crashes (± 9 for one standard deviation)
- No significant increase in the number of registered motorcycles
- 66% increase in the number of single unit motorcycle fatal crashes
- 59% increase in rural area motorcycle fatal crashes
- 229% increase (from 7 to 23) in motorcycle fatal crashes that occurred between the hours of 8:00pm-10:59pm
- 107% increase in male ages 50-59 motorcyclists fatalities

Fatal Crashes vs Fatal Injuries

	2017 (1/1/17 – 8/31/17)	2018 (1/1/18 – 8/31/18)
Total Fatal Crashes	833	854
Total Fatalities	892	932
Average Fatalities per Fatal Crash	1.07	1.09
Number of Fatal Crashes by Number of Fatalities		
Number of Fatal Crashes with 1 Fatality	779	786
Number of Fatal Crashes with Multiple Fatalities	54	68
<i>Number of Fatal Crashes with 2 Fatalities</i>	51	59
<i>Number of Fatal Crashes with 3 Fatalities</i>	2	8
<i>Number of Fatal Crashes with 4 Fatalities</i>	0	1
<i>Number of Fatal Crashes with 5 Fatalities</i>	1	0
Data as of 9/6/18		

- About 6% of all fatal crashes in 2017 (through August 31) involved multiple fatalities, whereas about 8% of all fatal crashes in 2018 involved multiple fatalities.

North Carolina Serious Injuries (A Type Injury - Disabling) Trends Since 2002



Year to Date (January-August) Serious Injuries

